

Office to let

One Herastrau Offices

Bucharest, Sector 1, 30-34 Daniel Danielopolu st.



Building information

Building status	Existing
Year of construction	2019
Parking ratio	1 / 150 sq m
Total building area	7 685 sq m

Commercial terms

Office space*	after login *
Parking	after login *
Service charge*	after login *
Minimum lease term	after login *
Availability	after login *

* Asking terms for m²/month

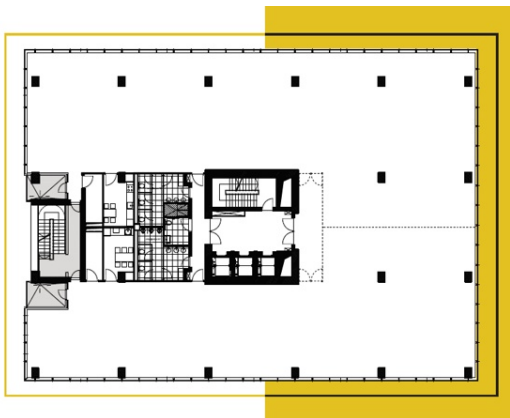
Location



Available space

Building completely leased

Typical floor plan



Public transport

Bus: 112, 301, 330

Contact



+40 21 302 3400

More information